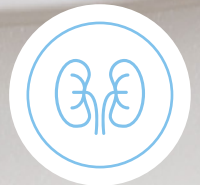




The Essentials

Dialysis





Dialysis kits

Catheter

DIALYSIS CATHETER KIT

Connection

Composition :

- 1 Mob cap
- 2 Face masks
- 1 Non-woven gown
- 1 Non-woven 44x75 aperture drape
- 1 Pair of Nitrile gloves
- 15 Swabs 7,5x7,5
- 2 Clamping forceps
- 2 Syringes 20ml LL
- 2 Syringes 10ml LL
- 1 Needle 18G
- 1 Gallipot 60ml
- 4 Adhesive strips
- 1 Film dressing
- 1 Enveloping drape



Packaging :

- Flexible blister

Ref : 8945

DIALYSIS CATHETER KIT

Disconnection

Composition :

- 1 Mob cap
- 2 Face masks
- 1 Non-woven gown
- 1 Pair of Nitrile gloves
- 15 Swabs 7,5x7,5
- 1 Clamping forceps
- 2 Syringes 3ml LL
- 1 Needle 18G
- 1 Cap LLM Blue
- 1 Cap LLM Red
- 2 Film dressings
- 1 Enveloping drape



Packaging :

- Flexible blister

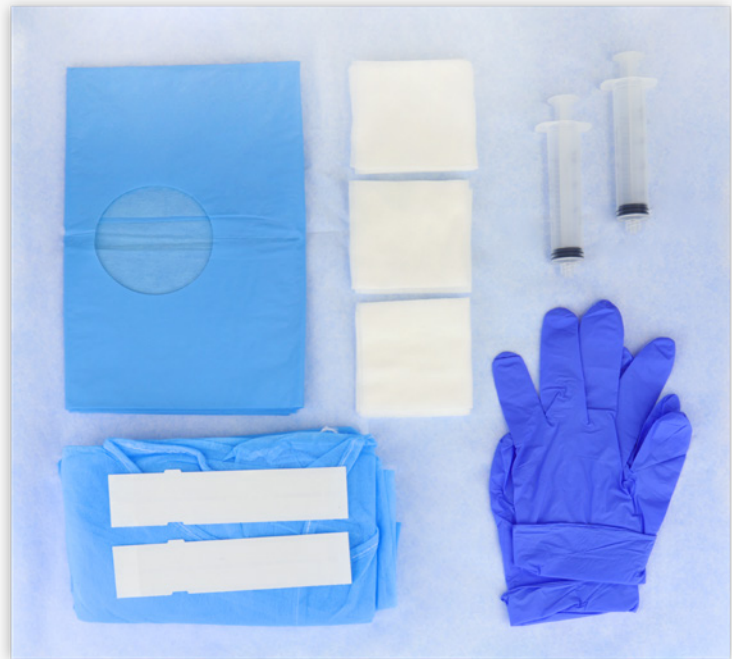
Ref : 8955

DIALYSIS CATHETER KIT

Connection and deconnection

Connection part :

- 1 Non-woven gown
- 1 Non-woven 44x75 aperture drape
- 1 Pair of Nitrile gloves
- 2 Syringes 20ml LL
- 15 Swabs 7,5x7,5
- 4 Adhesives strips
- 1 Enveloping drape



Disconnection part :

- 1 Non-woven gown
- 1 Pair of Nitrile gloves
- 10 Swabs 7,5x7,5
- 2 Syringes 20ml LL
- 2 Syringes 3ml LL
- 1 Needle 18G
- 1 Cap LLM blue
- 1 Cap LLM red
- 1 Enveloping drape



Packaging : 2 flexibles blister

Ref : 8942

DIALYSIS PERITONEAL KIT

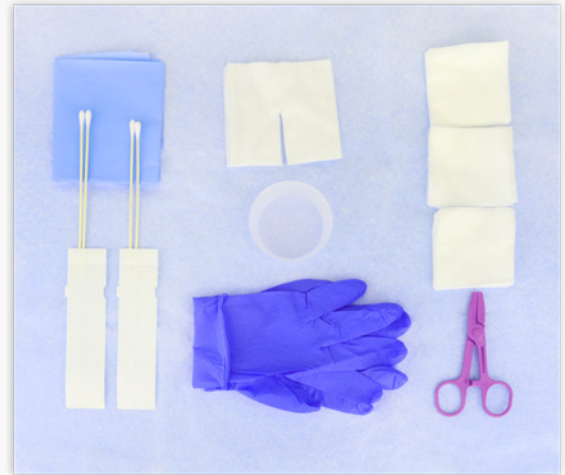
Composition :

- 1 Cellulosic drape 38x44
- 1 Pair of Nitrile gloves
- 15 Swabs 7,5x7,5
- 2 Splitted swabs
- 1 Clamping forceps
- 1 Gallipot 90ml
- 4 Wooden sticks
- 4 Adhesive strips
- 1 Enveloping drape

Packaging :

- Flexible blister

Ref : 8948



DIALYSIS FISTULA KIT

Connection and disconnection

Ref : 8943

Connection part :

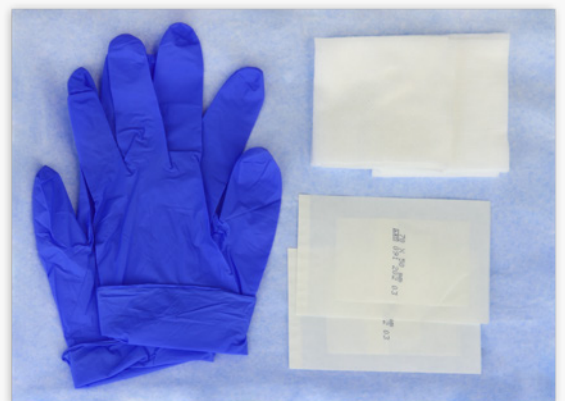
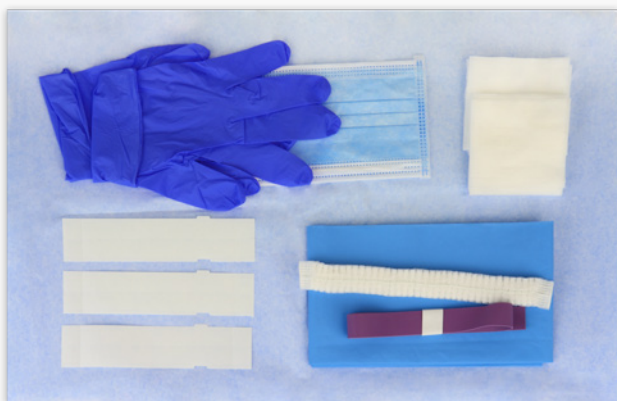
- 1 Face mask
- 1 Non-woven drape 44x75
- 1 Pair of Nitrile gloves
- 1 Tourniquet
- 10 Swabs 7,5x7,5
- 6 Adhesives strips
- 1 Enveloping drape

Disconnection part :

- 10 Swabs 7,5x7,5
- 1 Pair of Nitrile gloves
- 2 Non-woven dressings

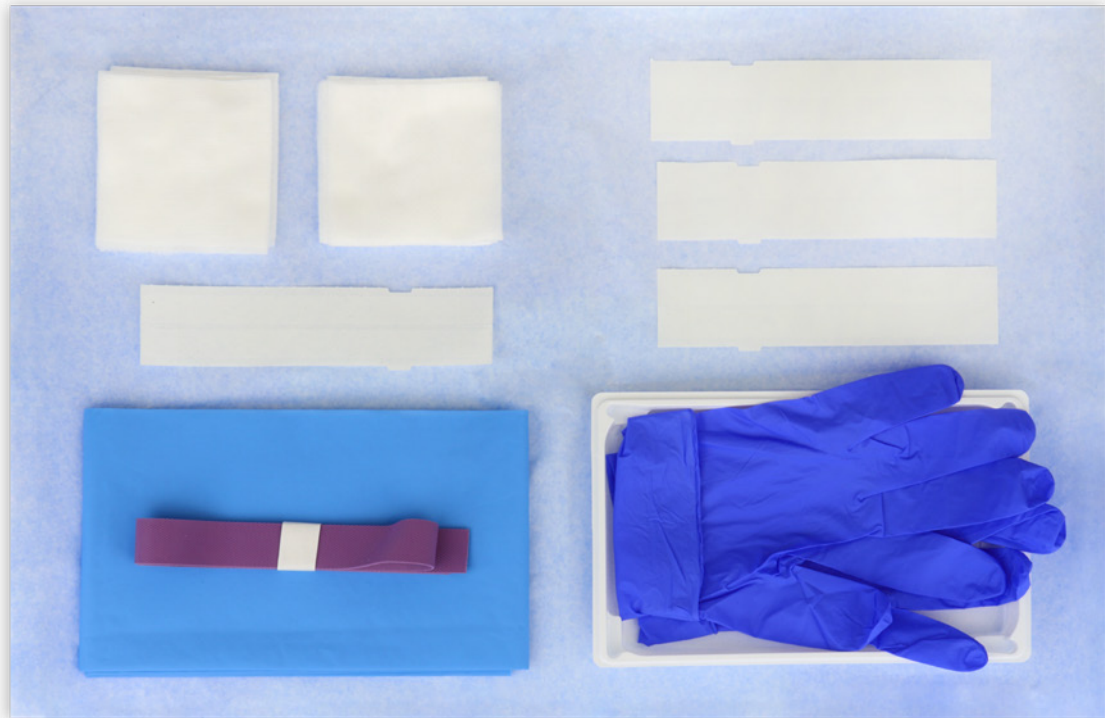
Packaging :

- 2 flexibles blisters



DIALYSIS FISTULA KIT

Connection



Composition :

- 1 Non-woven drape 44x75
- 1 Pair of Nitrile gloves
- 10 Compresses 7,5x7,5
- 1 Tourniquet

- 8 Adhesive strips
- 1 Tray
- 1 Enveloping drape

Packaging :

- Flexible blister

Ref : 8944



For more information, contact :

Customer service

+33 (0)5 61 00 71 81
hemodia@hemodia.com



Hemodia SAS

85 rue du Chêne vert
31670 Labège - France

Your local representative



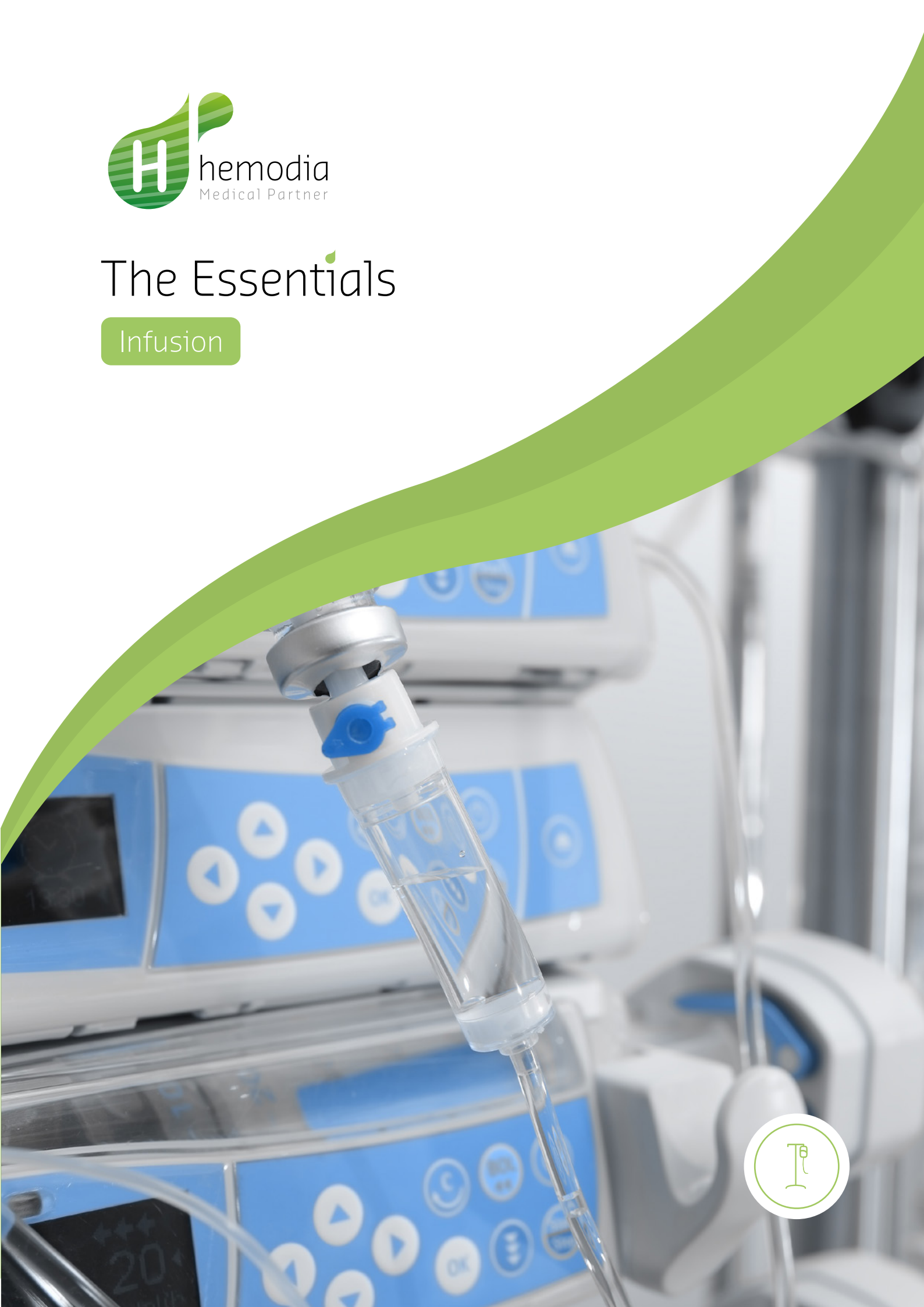
*The care sets are CE marked class Is or IIa medical devices or assemblies.
Please read the instructions for use accompanying the medical devices carefully before use.*

This document is intended for health professionals only. This document is the property of Hemodia; it must not be copied..



The Essentials

Infusion





Infusion kits

CVC FITTING KIT

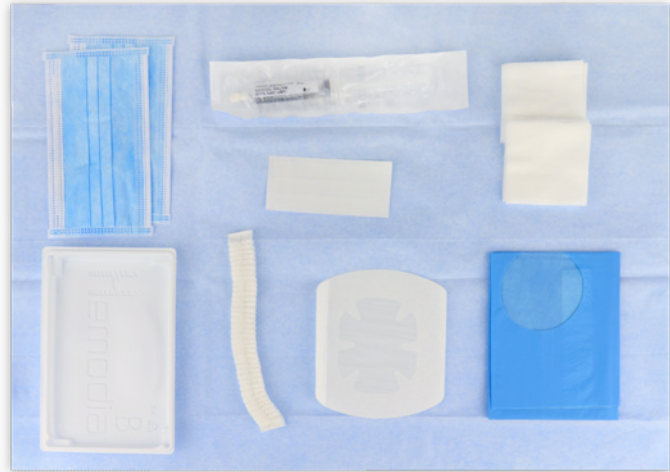
Réf : 8950

Composition :

- 1 Mob cap
- 2 Face masks
- 1 Non-woven 44x75 aperture drape
- 10 Swabs 7,5x7,5
- 1 Film dressing with non adhesive window
- 3 Adhesives strips
- 1 Tray
- 1 Enveloping drape
- 1 Pre-filled syringe NaCl

Packaging :

- Flexible blister
- Overwrapping bag



CVC DISCONNECTION KIT

Composition :

- 1 Face mask
- 1 Cellulosic drape 38x44
- 10 Swabs 7,5x7,5
- 1 Non-woven dressing

Packaging :

- Flexible blister

Ref : 8952

CVC DISCONNECTION KIT

with pre-filled syringe NaCl

Composition :

- 1 Face mask
- 1 Cellulosic drape 38x44
- 10 Swabs 7,5x7,5
- 1 Non-woven dressing
- 1 Pre-filled syringe NaCl

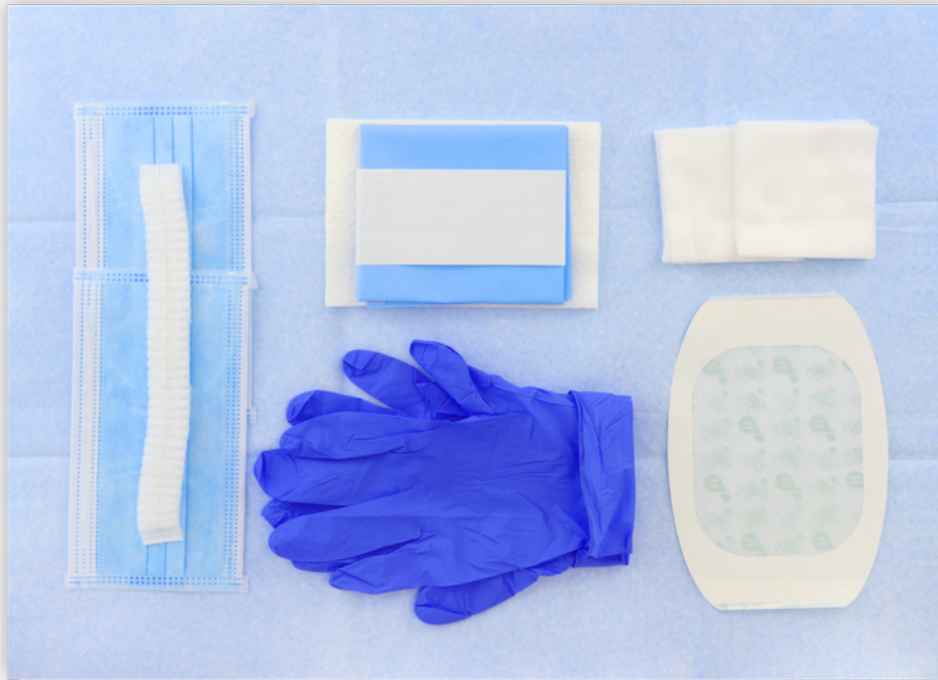
Packaging :

- Flexible blister
- Overwrapping bag

Ref : 8953



Only for ref : 8953



Only for ref : : 9166

CVC CARE KIT

Composition :

- 1 Hand towel
- 1 Mob cap
- 2 Face masks
- 1 Pair of Nitrile gloves
- 1 Cellulosic drape 38x44
- 10 Swabs 7,5x7,5
- 1 Film dressing
- 3 Adhesives strips
- 1 Enveloping drape

Packaging :

- Flexible blister

Ref : 8954

CVC CARE KIT

with pre-filled syringe NaCl

Composition :

- 1 Hand towel
- 1 Mob cap
- 2 Face masks
- 1 Pair of Nitrile gloves
- 1 Cellulosic drape 38x44
- 10 Swabs 7,5x7,5
- 1 Film dressing
- 3 Adhesives strips
- 1 Enveloping drape
- 1 Pre-filled syringe NaCl

Packaging:

- Flexible blister
- Overwrapping bag

Ref : 9166



For more information, contact :

Customer service
+33 (0)5 61 00 71 81
hemodia@hemodia.com



Hemodia SAS
85 rue du Chêne vert
31670 Labège - France

Your local representative



*The care sets are CE marked class Is or Ila medical devices or assemblies.
Please read the instructions for use accompanying the medical devices carefully before use.*



The Essentials

Anesthesia - Intensive care





Anesthesia kit

CENTRAL VENOUS ACCESS FITTING KIT

Composition :

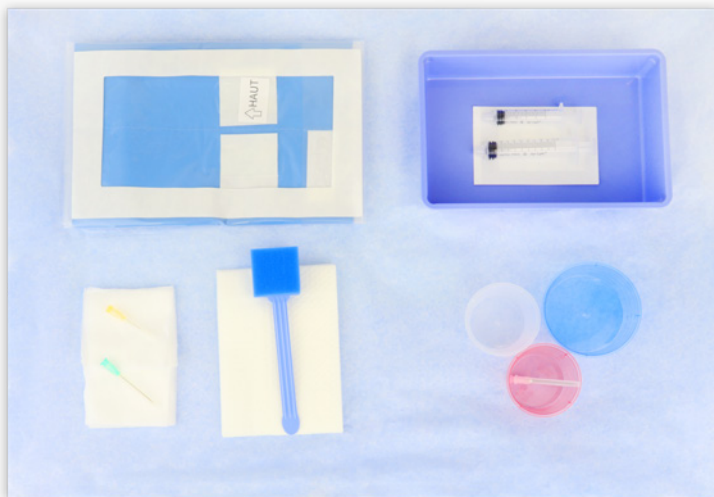
- 1 Hand towel
- 1 Aperture drape NW/PE 80x140
- 1 Sponge stick
- 10 Swabs 7,5x7,5
- 1 Colour gallipot 60ml
- 1 Gallipot 60ml
- 1 Syringe 10ml LL
- 1 Needle 18G
- 1 Needle 25G
- 1 Needle 21G
- 1 Probe cover
- 1 Ultrasound transmission gel
- 1 Scalpel n°11
- 1 Film dressing
- 1 Tablet
- 1 Enveloping drape



Packaging :

- Flexible blister

Ref : 8957



LOCO-REGIONAL ANESTHESIA KIT

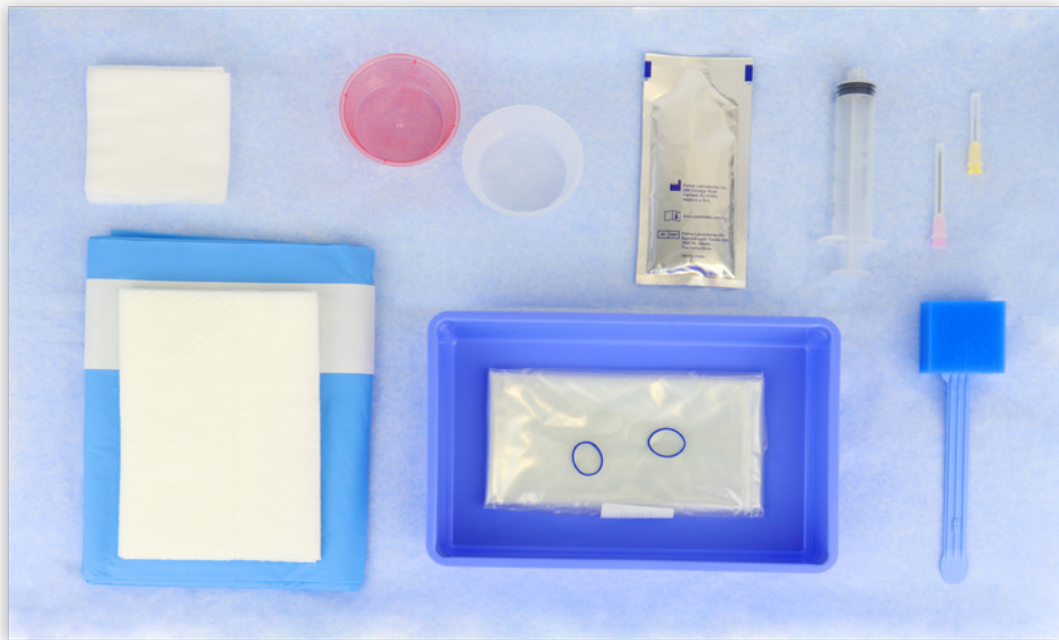
Composition :

- 2 Hands towels
- 1 Aperture drape NW/PE 80x130
- 1 Sponge stick
- 10 Swabs 7,5x7,5
- 1 Gallipot 60ml
- 1 Colour gallipot 60ml
- 1 Colour gallipot 120 ml
- 1 Syringe 5ml LL
- 1 Syringe 10ml LL
- 1 Needle 25G
- 1 Needle 21G
- 1 Needle 18G
- 1 Non-woven dressing
- 1 Tablett
- 1 Enveloping drape

Packaging :

- Flexible blister

Ref : 8951



SINGLE SHOT ANESTHESIA KIT

Ref : 8956

Composition :

- 2 Hands towels
- 1 Adhesive drape NW 75x90
- 1 Sponge stick
- 5 Swabs 7,5x7,5
- 1 Syringe 20ml LL
- 1 Colour gallipot 60ml
- 1 Gallipot 60ml
- 1 Needle 18G
- 1 Needle 25G
- 1 Probe cover
- 1 Ultrasound transmission gel
- 1 Tablett
- 1 Enveloping drape

Packaging :

- Flexible blister



For more information, contact :

Customer service

+33 (0)5 61 00 71 81
hemodia@hemodia.com



Hemodia SAS

85 rue du Chêne vert
31670 Labège - France

Your local representative



*The care sets are CE marked class Is or Ila medical devices or assemblies.
Please read the instructions for use accompanying the medical devices carefully before use.*



The Essentials

Dressing - Bladder Catheterization





Care kits

BLADDER CATHETERIZATION KIT

Composition :

- 1 Non-woven 75x75 aperture drape
- 1 Pair of Nitrile gloves
- 10 Swabs 7.5x7.5
- 1 Kocher forceps
- 1 Sterile water ampoule
- 1 Lubricating gel
- 1 Syringe 20ml LL
- 1 Needle 18G
- 2 Adhesives strips
- 1 Tray
- 1 Enveloping drape

Packaging :

- Flexible blister

Ref : 8947

BLADDER CATHETERIZATION KIT COMPLETE

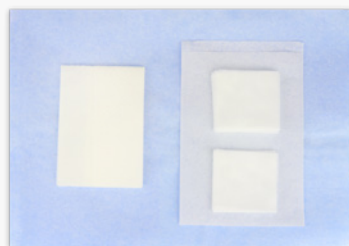


Catheterization part :

- 1 Non-woven 75x75 aperture drape
- 1 Pair of Nitrile gloves
- 10 Swabs 7,5x7,5
- 1 Sterile water ampoule
- 1 Lubricating gel
- 1 Syringe 20ml LL
- 1 Needle 18G
- 1 Kocher forceps
- 2 Adhesives strips
- 1 Tray
- 1 Enveloping drape

Cleaning part :

- 1 Hand towel
- 10 Swabs 7,5x7,5
- 1 Disposable washcloth



Packaging :

- Flexible blister

Ref : 8949



DRESSING KIT

Composition :

- 1 Cellulosic drape 38x44
- 1 Blue tweezers
- 1 Purple tweezers
- 5 Balls plum size
- 5 Swabs 7,5x7,5

Packaging :

- Blister pack

Ref : 8582



ref 8582 with tweezers

ref 8783 Kocher clamp

KOCHER DRESSING KIT

Composition :

- 1 Cellulosic drape 38x44
- 1 Blue tweezers
- 1 Purple kocher forceps
- 5 Swabs 7,5x7,5
- 5 Balls plum size

Packaging :

- Blister pack

Ref : 8783



For more information, contact :

Customer service

+33 (0)5 61 00 71 81
hemodia@hemodia.com



Hemodia SAS

85 rue du Chêne vert
31670 Labège - France

Your local representative



*The care sets are CE marked class Is or IIa medical devices or assemblies.
Please read the instructions for use accompanying the medical devices carefully before use.*



The Essentials

Gynaecology





Gynaecology kit

KIT FOR EPISIOTOMY REFLECTION

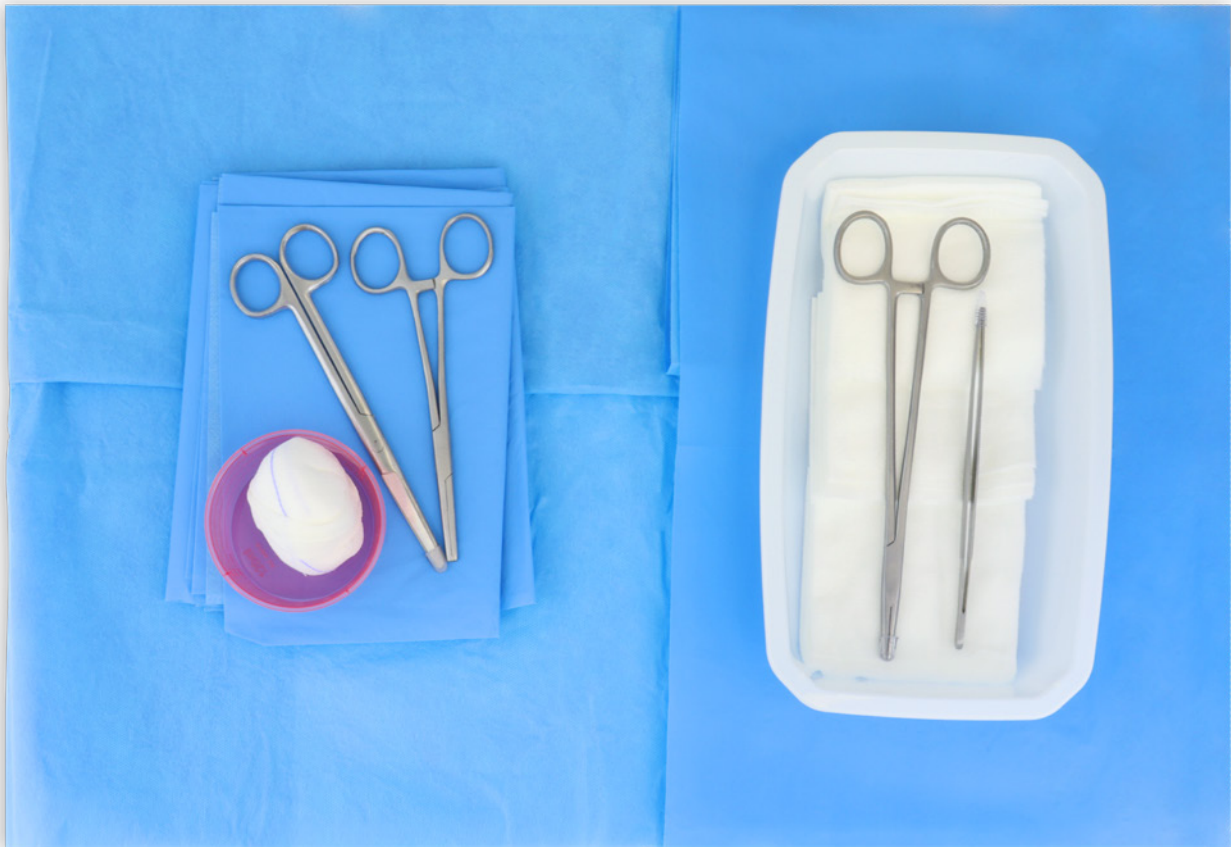
Composition :

- 2 Non-woven drape 75x90
- 1 Needle holder
- 1 Metallic tweezers
- 1 Scissors 17cm
- 1 Metallic Kocher forceps
- 15 Swabs 10x10
- 1 Vaginal tampon
- 1 Colour gallipot 120ml
- 1 Tray
- 1 Enveloping drape

Packaging :

- Flexible blister

Ref : 8946



For more information, contact :

Customer service
+33 (0)5 61 00 71 81
hemodia@hemodia.com



Hemodia SAS
85 rue du Chêne vert
31670 Labège - France

Your local representative



*The care sets are CE marked class Is or Ila medical devices or assemblies.
Please read the instructions for use accompanying the medical devices carefully before use.*

This document is intended for health professionals only. This document is the property of Hemodia; it must not be copied...